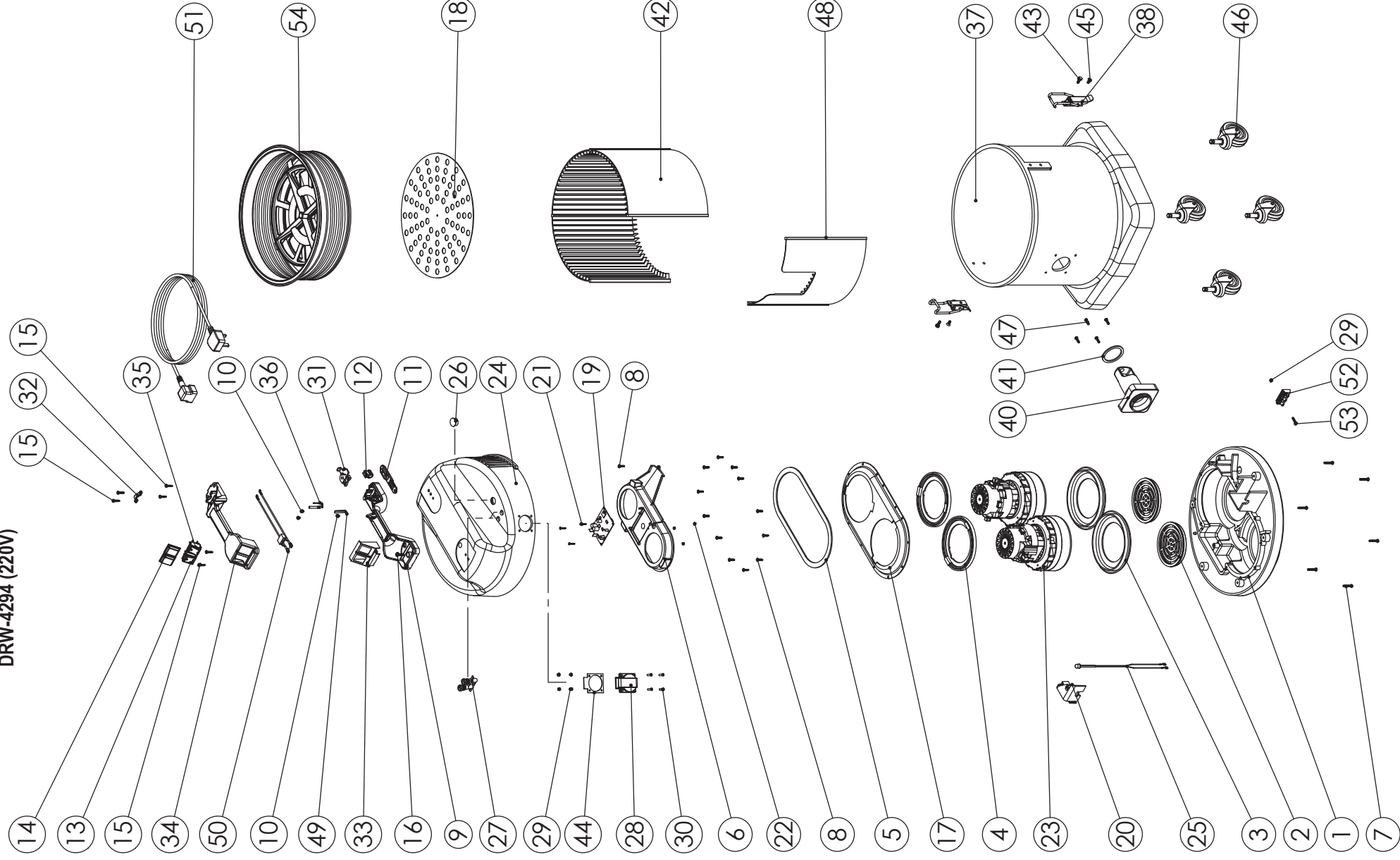


**Numatic International Spare Parts**

**Model No: NDD570A EXPLODED DRAWING**

NB: FOR WIRING SEE DRAWING: DRW-4295 (240V)  
DRW-4294 (220V)

234684  
DRAWING: DRW-4358 A01  
22/10/2009



**Numatic International Spare Parts**

**Model No: NDD570A EXPLODED DRAWING**

POS:	ITEM NO:	DESCRIPTION:	COMMENTS:
1	301048	PROCESSED BOTTOM MOTOR HOUSING	
2	206010	FAN GUARD	
3	202005	MOTOR BOTTOM GASKET	
4	227925	TOP MOTOR GASKET	
5	202012	GASKET	
6	237067	DUPEX AIR SEPERATOR (FINE DUST SYSTEM)	
7	219369	No8 X 1 INCH LONG POZI PAN STAINLESS STEEL PLASTITE SCREW	
8	219370	No8 X 5/8 INCH LONG PLASTITTE STAINLESS STEEL SCREW	
9	320686	HANDLE BASE MOULDING	
10	219090	M4 X 8MM LONG POZI PAN SEMS SCREW	
11	227636	STRAIN RELIEF	
12	227637	CABLE CLIP	
13	220652	RED ROCKER SWITCH	
14	206573	SWITCH COVER (PLUG HANDLE)	
15	219107	No6 X 5/8 INCH LONG POZI PAN PLASTITTE SCREW	
16	219546	M5 X 20MM LONG POZI PAN SEMS SCREW	
17	225175	DUPEX NDD TOP MOTOR HOUSING	
18	401447	DRUM BASE (PAINTED GREY)	
19	230148	DUPEX CONTROL BOARD PCB 100-240 V AC .50/60HZ	
20	237069	LED HOLDER (DUSTCARE SYSTEM)	
21	219038	M3 X 16MM LONG SLOT SCREW	
22	219070	M3 NYLON INSERT NUT	
23	205442	220V 2 STAGE D.I.BYPASS ACUSTEK MOTOR (BL21102T) (MARKED 230V) TCO	
24	205443	240V 2 STAGE D.I.BYPASS ACUSTEK MOTOR (BL21104T) (MARKED 230V) TCO	
25	323003	NDD COVER PROCESSED FOR 230V EURO PTO SOCKET / 2 FUSE HOLDERS + LOW FLO LED	FOR NON POLARISED SOCKET
26	323002	NDD COVER PROCESSED FOR 230V PTO SOCKET / 1 FUSE HOLDERS + LOW FLO LED	
27	230165	LOW FLOW LED LOOM	
28	220967	LENS COVER	
29	221420	FUSE HOLDER	SEE BELOW FOR FUSE
30	220179	6.3AMP ANTI-SURGE GLASS FUSE	
31	230161	UK SOCKET (BS 13630 13A 250V UK)	
32	230162	EURO SOCKET	
33	230164	SWISS SOCKET	
34	219083	M4 NYLON INSERT NUT	
35	219407	M4 X 16MM LONG POZI PAN COUNTERSUNK SCREW	
36	227631	TERMINAL COVER & CLAMP (3 PIN)	
37	216290	CABLE CLAMP	
38	227629	SWITCH MOUNTING BRACKET	
39	227620	HANDLE COVER 16AMP 3PIN 2 SWITCH	
40	220582	GREEN ROCKER SWITCH	
41	206562	CONTACT PIN	
42	325132	GREY CONTAINER	
43	206135	TOGGLE FASTENER	
44	208220	BAG CONNECTOR - (FINE DUST 14" DRUM)	
45	202027	HOSE FLANGE GASKET	
46	237048	DRUM LINER (FOR ASSEMBLY VIEW)	
47	219045	M5 X 16MM LONG POZI PAN SEMS SCREW	
48	230166	SOCKET GASKET	
49	219330	M5 X 12MM LONG POZI PAN COUNTERSUNK SCREW	
50	204060	3 INCH CASTOR	
51	219105	No8 X 5/8 INCH LONG POZI PAN PLASTITTE SCREW	
52	308028	DRUM LINER (FOR ASSEMBLY VIEW ONLY)	
53	206563	EARTH CONTACT PIN	
54	230151	220V DUPEX SUPPRESSOR ASSEMBLY	
55	236011	10.0M X 1.50MM X 3 CORE NUCABLE (UK PLUG)	
56	236143	10.0M X 1.50MM X 3 CORE NUCABLE (EURO PLUG)	
57	236019	10.0M X 1.50MM X 3 CORE NUCABLE (SWISS PLUG)	
58	208263	TERMINAL BLOCK (3-pole 16A)	
59	21990V	M4 X 20MM LONG POZI PAN SCREW	
60	502014	14 INCH COMBINATION MICROTEx FILTER ASSEMBLY	